

APPLICATION NOTE

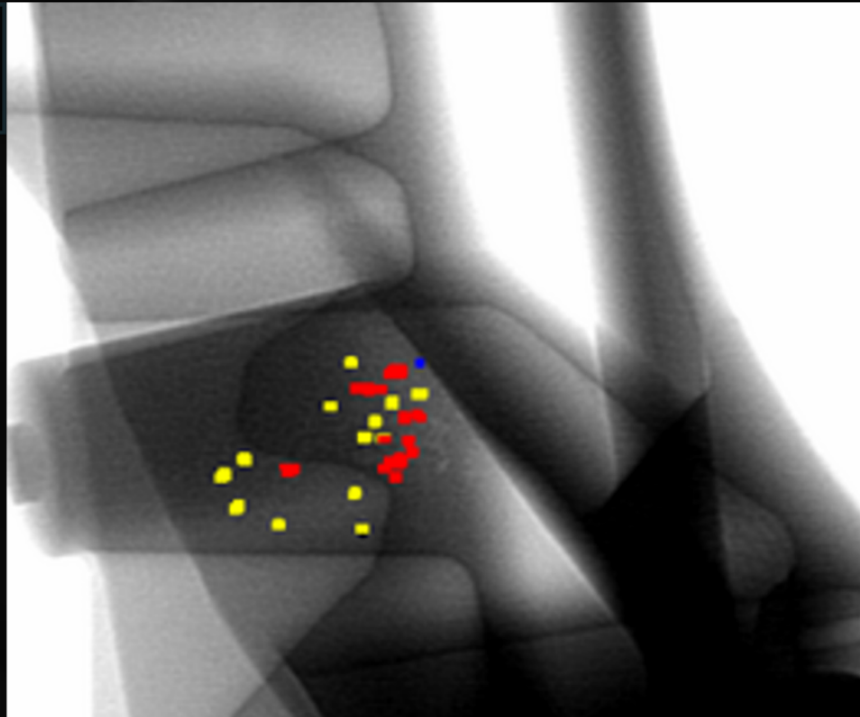


XRAY ADR FOR CASTING AUTOMOTIVE PARTS

- Company manufacture auto components and supplies aluminium casted components.
- Inspection with radiography and company manually inteprets X-Ray images.
- Intepretation is not consistent and time consuming.

OUR SOLUTION

- Dhvani's ADR standalone system customized for company's data and standards.
- X-Ray images uploaded into ADR platform and defects identified automatically in images.
- Company can view results and generate reports.



XRAY IMAGE

ADR IMAGE

IMPACT

- Auto detection of defects significantly reduces inspection time of components.
- Improve reliability of data intepretation of x-ray images.

